

Suction Catheter Production Procedure



Preparations of Raw Materials.



PC for Connector parts



PVC for tubing

Note: Material for the connector plastic parts and tubing will depend on your actual requires.

1.Tubing Extrusion

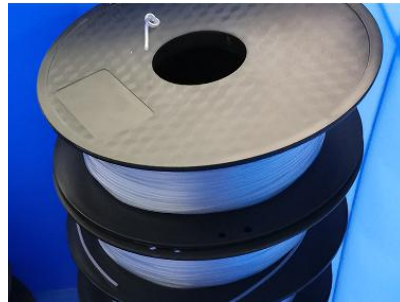
Raw Materials



① Extrusion Line Machine



1.Material type and the details table
2.Tube size details(Drawing)



2. Tube Cutting

② Tube Cutting Machine



Cut to the require length

3. Injection Molding.



③AM701-15T Plastic Injection Molding Machine

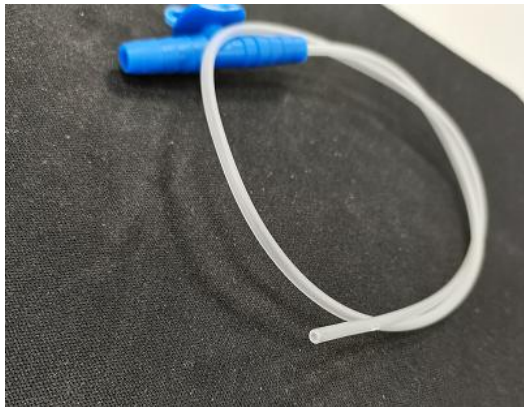


Injection the connector plastic parts

4. Tip forming



④ Tip Forming Machine

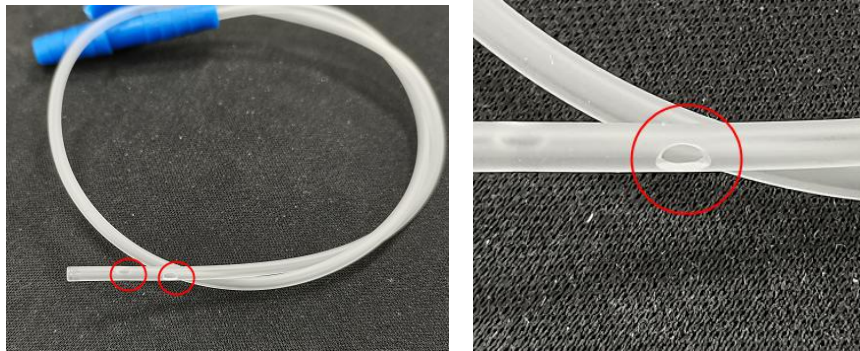


Make the super smooth rounded open tip

5. tapered eyes Punching



⑤ Eye Punching Machine



Punching two tapered eyes